

DATA SHEET



- **Output Current up to 200 A**
- **Two channels**
- **Up to 300 μ s pulsewidth**
- **Rise/fall time of <10 μ s**
- **Single-shot to 20 PPS at max current**
- **Optimized for driving up to 12 bars**
- **Only 3.2 oz**
- **Higher output current available**

The PLDD-200-12-20D is a compact, ultra-light weight pulsed current source designed to drive up to two independent laser diode bars, arrays of laser diode bars, or any low impedance load. The user switches between channels by toggling an input line. This ensures that the loads are not driven at the same time. The unit features a high peak current of 200 amps with a rise-time of <10 μ s (load dependent) and a maximum pulse width of 300 μ s. The pulse repetition frequency can be varied from single shot to 20 PPS.

Using the optional Universal Interface Board (UIB-01) the user has easy access to all control pins. Commonly used signals on the UIB-01 are available

through BNC connections such as the input trigger and the current monitor which allows the user a real time view of the laser diode current.

Multiple units can be operated in parallel allowing the user to achieve unprecedented current levels in a small, compact, and battery operated system.

The PLDD-200-12-20D requires a user supplied +15 to +28 volt input supply.

OMNIPULSE TECHNOLOGY

6355 Nancy Ridge Drive, San Diego, CA 92121

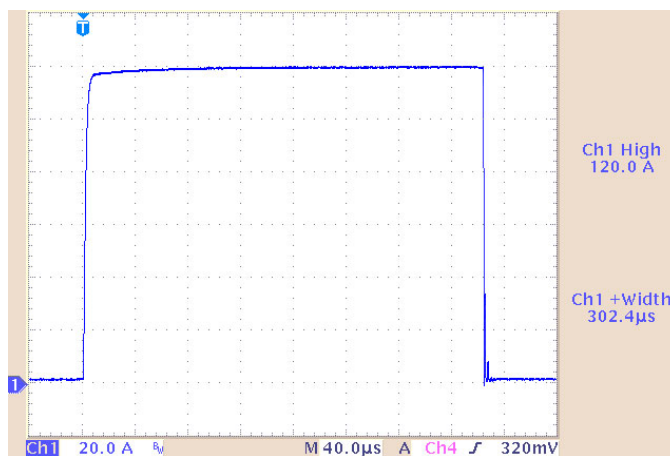
Tel: (858) 452-7700 • Fax: (858) 452-8788

Email: sales@omnipulsetechnology.com • <http://www.omnipulsetechnology.com>



SPECIFICATIONS†	
Parameter	Value
Pulse Output Current	
Amplitude Range	0 –200 A*
Means of Adjustment	DC or Analog input/internal adjustment with potentiometer
Pulse Rise/Fall Time	<10 μ s (typ)
Pulse Width	0-300 μ s
Pulse Recurrence Frequency Range	Up to 20 PPS at max current (300 μ s pulse)*
Load Voltage	24 V* max
Output Connection	Twisted pair AWG 16, 6" length
Trigger Requirements	
Type	3.3/5 volt CMOS Input
Outputs	
Current Monitor	1.00 volt/100 amps into >10 kOhm 0.50 volt/100 amps into 50 Ohms
General	
Input Voltage Range	15-28 VDC
Input Current @ 15 Vin	Approx 2.8 amps
Input Current @ 28 Vin	Approx 1.5 amps
Dimensions (H X W X D) in.	1.23" X 3.70" X 1.40"
Weight	3.2 oz.

Current Monitor Output
100 A / 300 μ s pulse



Warning: Always discharge capacitor bank before connecting or removing any load

* Applies to either channel. The two channels will not operate at the same time.

†Specifications are subject to change without notice.

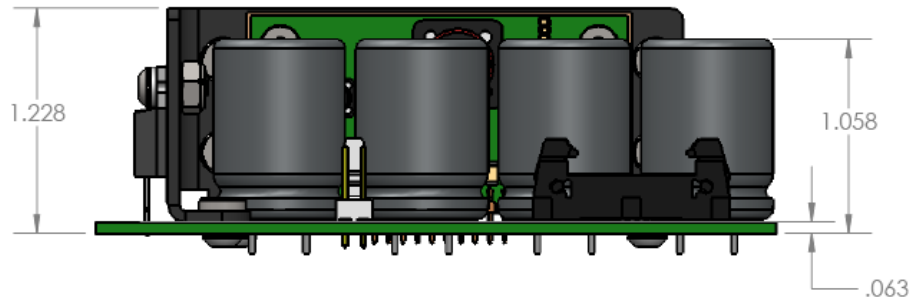
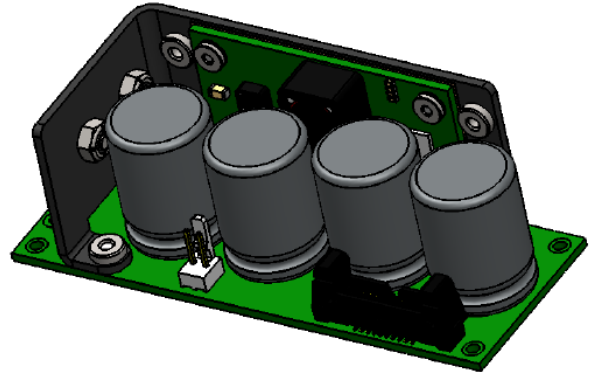
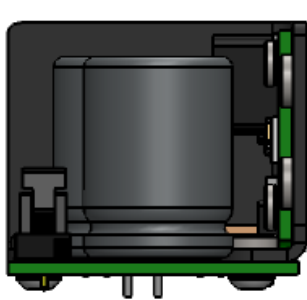
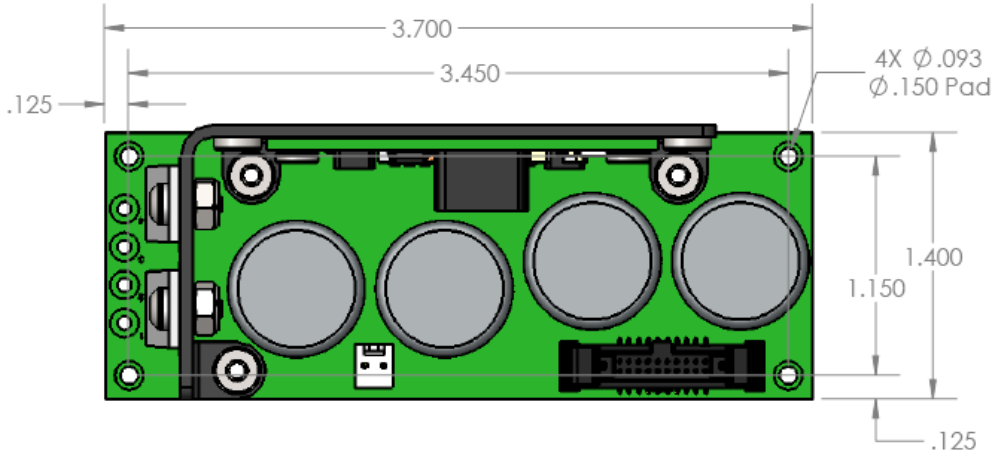
OMNIPULSE TECHNOLOGY

6355 Nancy Ridge Drive, San Diego, CA 92121

Tel: (858) 452-7700 • Fax: (858) 452-8788

Email: sales@omnipulsetechnology.com • <http://www.omnipulsetechnology.com>

PHYSICAL DIMENSIONS*



**Subject to change without notice.*

OMNIPULSE TECHNOLOGY

6355 Nancy Ridge Drive, San Diego, CA 92121

Tel: (858) 452-7700 • Fax: (858) 452-8788

Email: sales@omnipulsetechnology.com • <http://www.omnipulsetechnology.com>